


Rutherford County Commission

To: Steering Committee Members
From: Rhonda Allen – Commissioner, District 11 
CC: Mayor Burgess
Date: 2/6/2012
Re: Establish a new committee to study Road and School Board Zones

Problem: The existing Road and School Board Zones fail to meet basic apportionment principles of compactness, contiguity, respect for political boundaries (city limits) and shared communities of interest.

The most affected area is LaVergne.

1. LaVergne is divided into three separate school zones (1, 2 & 4) – resulting in a lack of respect for their political boundaries. Three school board members represent 9 commission districts.
2. School & Road Zone 4 contains an island – resulting in a non-contiguous zone.
3. There is great disparity between the demographic populations at schools located in LaVergne compared to Eagleville – resulting in diminished “shared community of interest”.

Our previous barrier to addressing this issue was respect for incumbency. Because the County Commission had protected elected officials with respect to drawing commission districts, we felt obligated to respect them when addressing the road and school zones.

Request: Appoint a new committee to study the Road and School Board Zones to determine if a better alignment exists.

Consider a future implementation date that will allow for all incumbents to complete their term.

Suggested Committee Make-up:

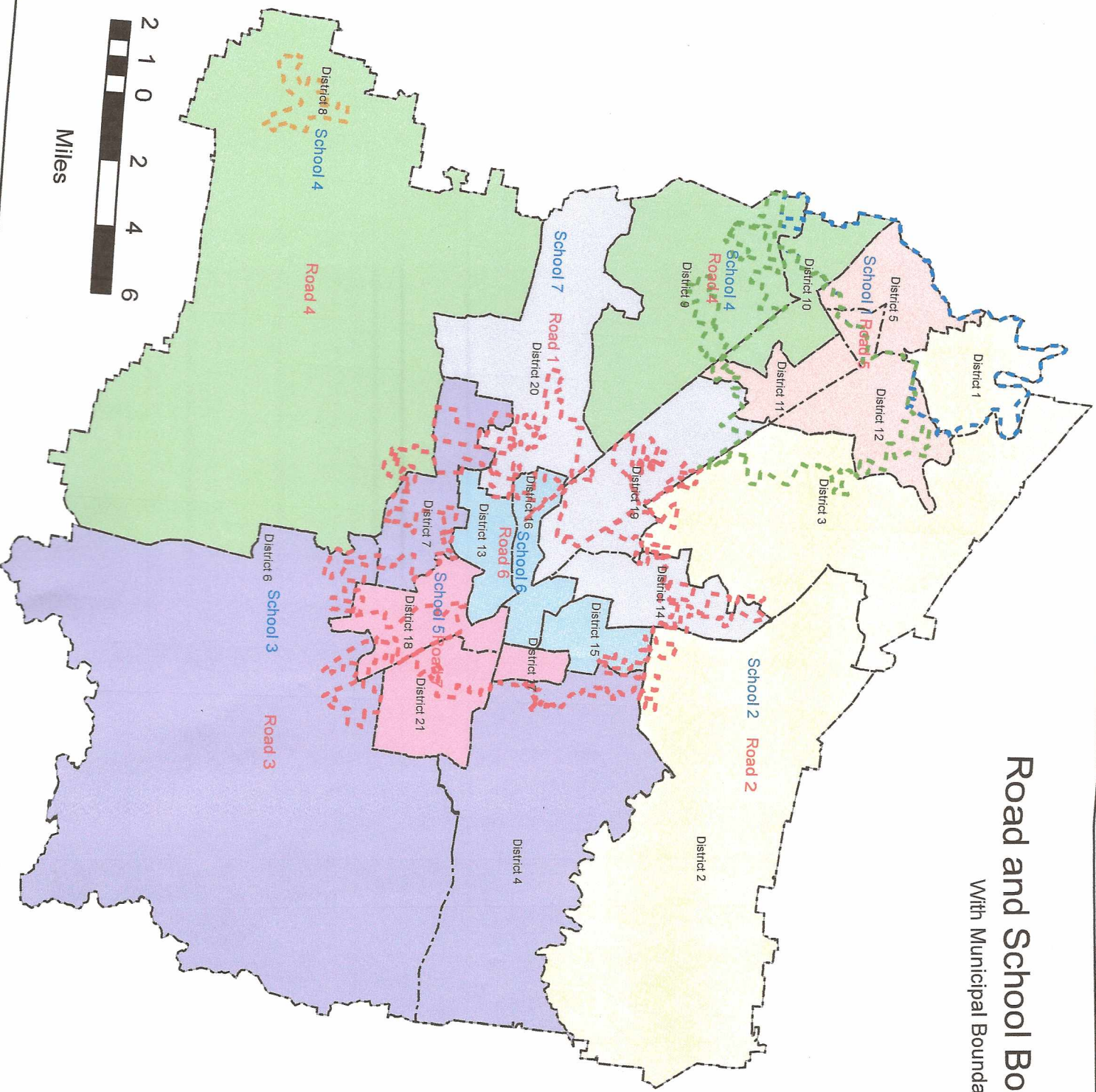
1. Include at least one member from the Road Board, School Board and County Commission for a total of three elected officials.
2. Ask the Mayors of LaVergne, Eagleville, Smyrna, & Murfreesboro to recommend one citizen (non-office holder) from their respective communities to serve on the committee for a total of four municipal citizens.
3. Accept applications from two citizens who reside in the unincorporated areas of Rutherford County for a total committee make-up of nine members.

A representative from Rutherford County OIT staff (for GIS purposes) and the County Attorney’s office will attend the meetings and work sessions to serve as resources for this committee.

- The committee will be appointed as soon as possible allowing for sufficient legal notice.
- The committee will elect their own chairman who will give monthly progress reports to the full commission until such time when a recommendation is made by this committee.
- The committee will make a recommendation to the full commission within six months from the date of their first meeting.

Road and School Board Zones

With Municipal Boundaries



- Legend**
- Combined Municipalities
 - Municipality
 - Essexville
 - Madrasboro
 - LaVigore
 - Combsboro
 - Combsboro Districts
 - Road and School Board Zones
 - Road, School
- | |
|-----|
| 1.7 |
| 2.2 |
| 3.3 |
| 4.4 |
| 5.1 |
| 5.6 |
| 7.5 |